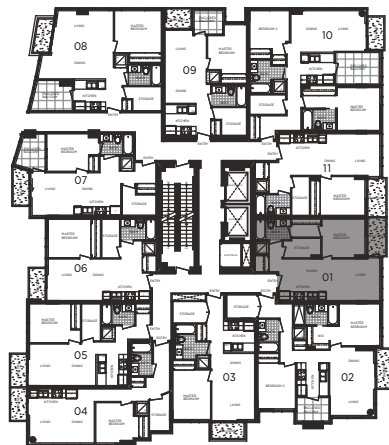
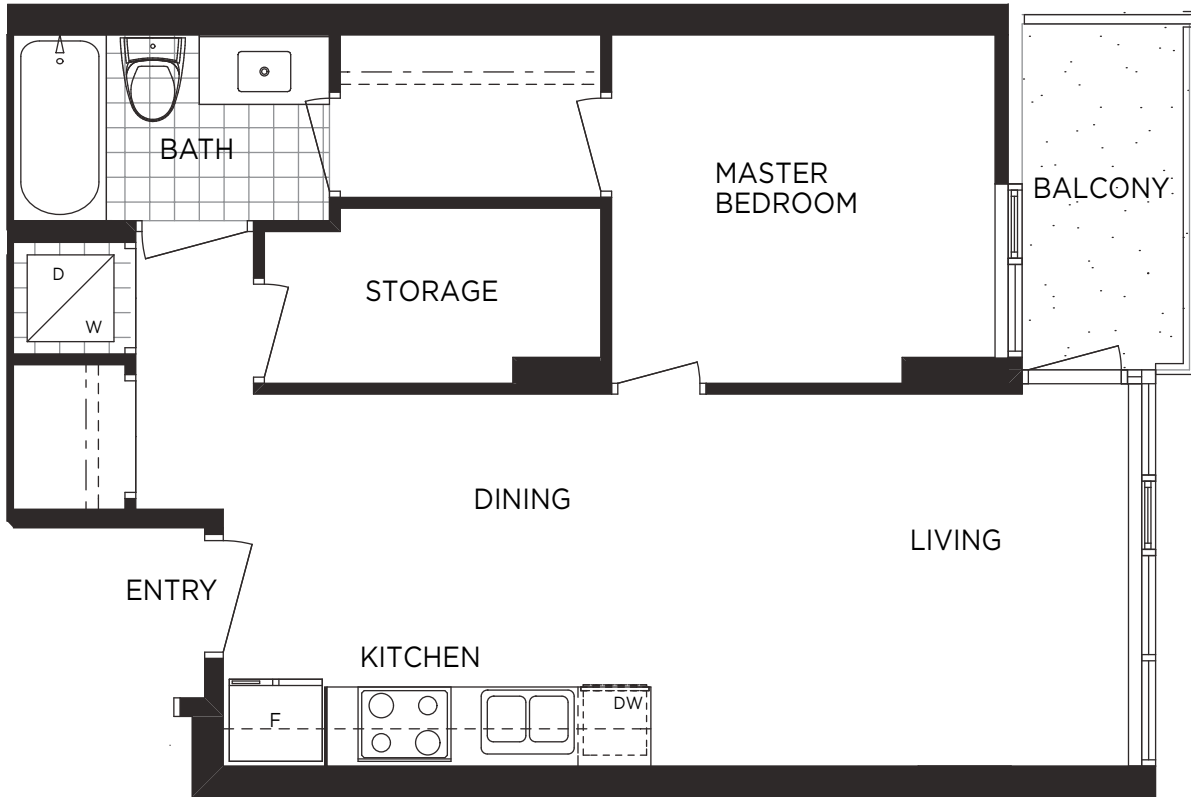


1 BEDROOM 563 SQ.FT. | TERRACE 44 SQ.FT. | TOTAL 607 SQ.FT.

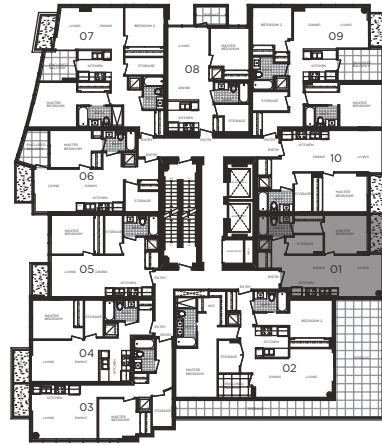
*1 BEDROOM 559 SQ.FT. | TERRACE 44 SQ.FT. | TOTAL 603 SQ.FT.

BUILDING C

- 1101*
- 1001
- 901
- 801
- 701



LEVEL 7, 8, 9 & 10



LEVEL 11



In the interest of product improvement and maintaining high standard of these homes, the developer reserves the right to make modifications and changes to plans, specifications and features. Sizes and dimensions are approximate and may vary with actual strata plan and survey.